



OPTIONAL

SERVICE BULLETIN

NUMBER: SB 500-31-009, REV B
MODEL: ECLIPSE EA500
SUBJECT: DIAGNOSTIC STORAGE UNIT (DSU) SPARES

1. PLANNING INFORMATION

A. Effectivity

Aircraft Serial Numbers 000001-000089.

B. Reason

DSU P/N 11-0323-07-A is now out of production. DSU P/N 11-0323-08-A is the current model in production and is readily available.

C. Description

Allows DSU P/N 11-0323-08-A to be used as a replacement for DSU P/N 11-0323-07-A.

Revision B changes the aircraft serial number effectivity of this Service Bulletin.

D. Relevant Publications

Illustrated Parts Catalog (IPC), P/N 06-117752, latest Rev.

E. Compliance

This Service Bulletin can be accomplished if DSU P/N 11-0323-07-A are no longer available.

Compliance with revision A of this Service Bulletin constitutes compliance with revision B.

F. Approval

This Service Bulletin is based on engineering data that is FAA-approved, and the modification herein complies with the applicable regulations.

G. Labor Requirements

The following information is for planning purposes only.

(1) Estimated labor hours to perform:

Suggested number of personnel: 1

Pilot's seat removal and installation: 20 minutes

Passenger seat removal and installation: 20 minutes

Floor panel removal and installation: 20 minutes

Harness connector modification: 30 minutes

Total labor hours: 2.5 hours

The above is an estimate based on properly equipped and experienced personnel complying with this Service Bulletin. Actual labor hours may vary depending on workforce experience, concurrent maintenance, discovery of other discrepancies, etc.

H. References

Illustrated Parts Catalog (IPC), P/N 06-117752, latest Rev.

I. Publications Affected

Illustrated Parts Catalog (IPC), P/N 06-117752, latest Rev.

SERVICE BULLETIN

2. MATERIAL INFORMATION

A. Materials

The following parts are required for this Service Bulletin.

Part Number	Description	Qty / Unit of Issue
D20419-18	Locking Hardware	4 EA

3. ACCOMPLISHMENT INSTRUCTIONS

A. Procedure

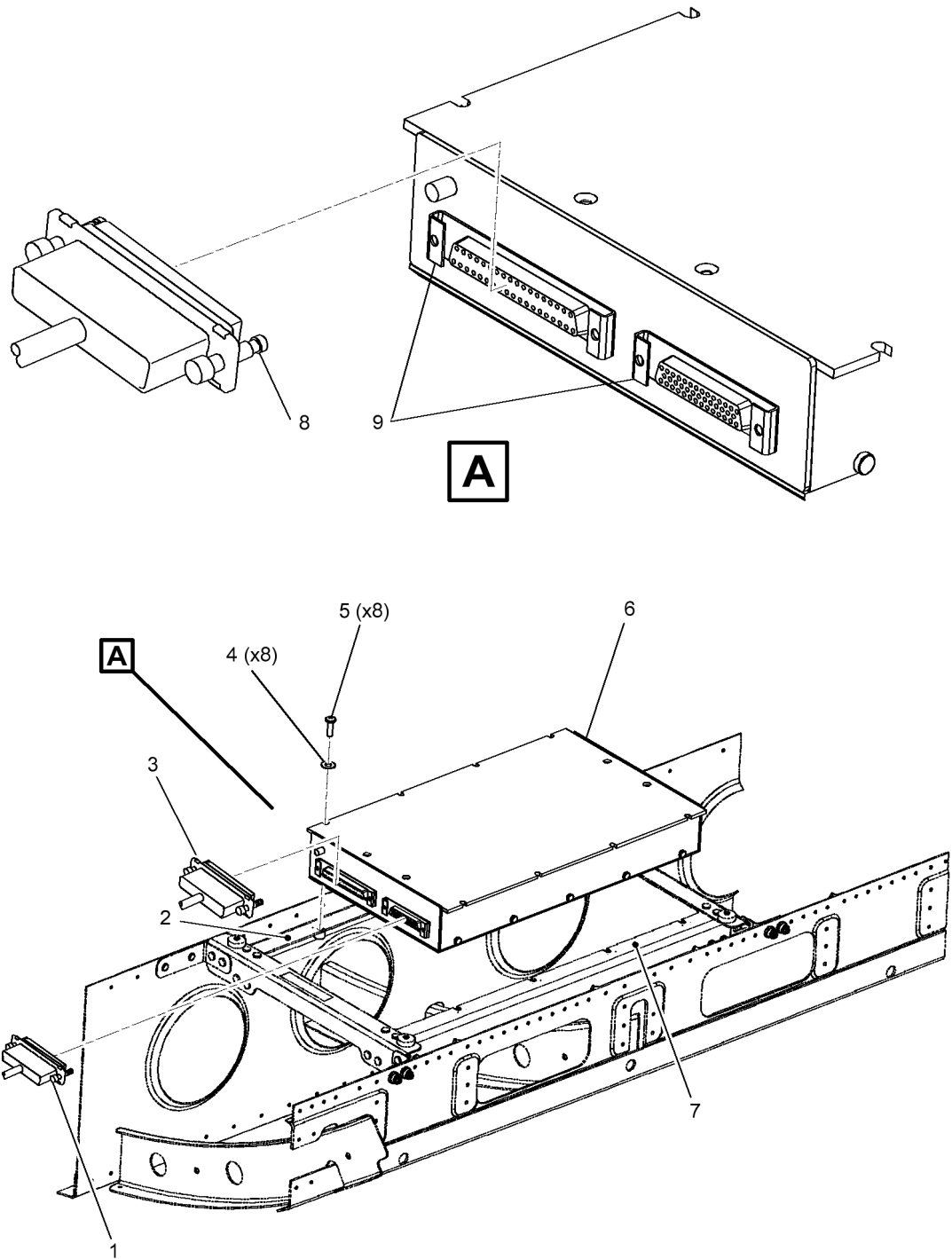
- (1) If SB 500-31-008 was complied with, DSU P/N 11-0323-08-A can be used as a replacement for DSU P/N 11-0323-07-A. If SB 500-31-008 was not complied with, continue to the next step.

NOTE: DSU P/N 11-0323-07-A and the harness connector (8, Figure 1) and (1, Figure 2) can be identified by the slide style retention device (9, Figure 1) on the DSU.
- (2) Make the aircraft safe for maintenance. Refer to AMM 20-00-01-051-921-001.
- (3) Remove electrical power or open the following:
 - ECB - DIAG STRG UNIT (L FWD Bus)
 - ECB - DIAG STRG UNIT (R AFT Bus)
- (4) Remove the left front passenger seat (if installed). Refer to AMM - 25-21-10-001-801 - PASSENGER SEAT - REMOVAL.
- (5) Remove the pilot's seat. Refer to AMM - 25-12-01-001-801 - COCKPIT SEAT COMPONENT - REMOVAL.
- (6) Fold the carpet as necessary to access floor panel.
- (7) Remove the 131 AZ - Floor Panel, Forward Left Cabin. Refer to AMM - 06-50-00-051-801-A - AIRCRAFT ACCESS PANELS or AMM - 06-50-00-051-801-B - AIRCRAFT ACCESS PANELS.
- (8) Disconnect the electrical connectors 39A10P01 and 39A10P02 (1, Figure 1) and (3, Figure 1) from the DSU (6, Figure 1).
- (9) Disconnect coax connector 39A10P03 from the DSU.
- (10) Remove the eight bolts (5, Figure 1) and washers (4, Figure 1) that attach the DSU (6, Figure 1) to the rails (2, Figure 1) and (7, Figure 1).
- (11) Remove the DSU P/N 11-0323-07-A (6, Figure 1) from the rails (2, Figure 1) and (7, Figure 1).
- (12) Remove and discard the attachment hardware (1, Figure 2) from the harness connectors at 39A10P01 and 39A10P02.
- (13) Attach the locking hardware P/N D20419-18 (5, Figure 3), one on each side of the connector on 39A10P01 (4, Figure 3) and 39A10P02 (6, Figure 3).
- (14) Put the DSU P/N 11-0323-08-A (3, Figure 3) on the rails and align holes.
- (15) Attach the DSU (3, Figure 3) to the rails with eight bolts (1, Figure 3) and washers (2, Figure 3). Torque the eight bolts (1, Figure 3) to 30-40 lbf.in (3,4-4,5 m.N).
- (16) Connect the electrical connectors 39A10P01 (6, Figure 3) and 39A10P02 (6, Figure 3) to the DSU (3, Figure 3). Torque the screws (5, Figure 3) to 4 in.lbs.
- (17) Connect coax connector 39A10P03 to the DSU. Torque connector to 15 in.lbs.

SERVICE BULLETIN

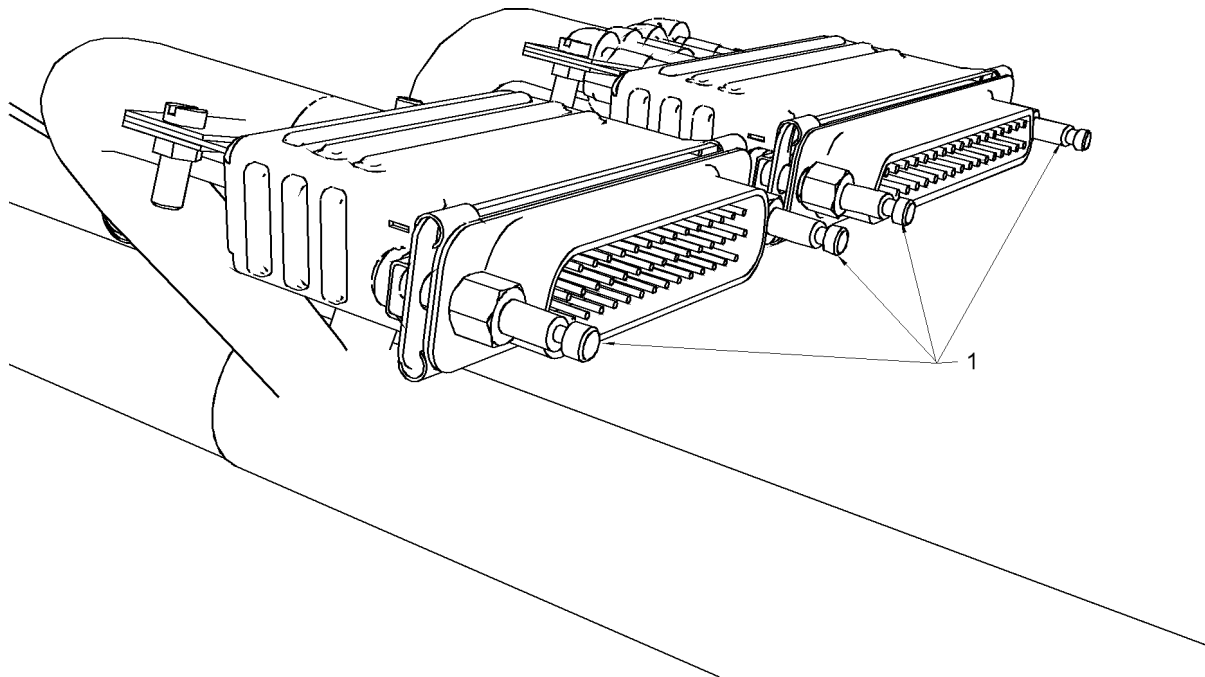
- (18) Using a Extech Milli-Ohmmeter, bond the DSU (3, Figure 3) to the rails. Refer to AMM - 20-03-00-051-801 - ELECTRICAL BONDING - MAINTENANCE PRACTICES. Resistance must be 2.5 milliohms or less.
- (19) If pulled, set the following to AUTO/ON:
 - ECB - DIAG STRG UNIT (L FWD Bus)
 - ECB - DIAG STRG UNIT (R AFT Bus)
- (20) Do the Adjustment/Test of the DSU, Refer to AMM - 31-30-00.
- (21) Install the 131 AZ - Floor Panel, Forward Left Cabin. Refer to AMM - 06-50-00-051-801-A - AIRCRAFT ACCESS PANELS or AMM - 06-50-00-051-801-B - AIRCRAFT ACCESS PANELS.
- (22) Install the pilot's seat. Refer to AMM - 25-12-01-041-801 - COCKPIT SEAT COMPONENT - INSTALLATION.
- (23) Install the left front passenger seat (if removed). Refer to AMM - 25-21-10-041-801 - PASSENGER SEAT - INSTALLATION.
- (24) Remove all tools, equipment and unwanted material from the work area.
- (25) If all other maintenance is complete, return the aircraft to service. Refer to AMM-20-00-02-921-001.

SERVICE BULLETIN



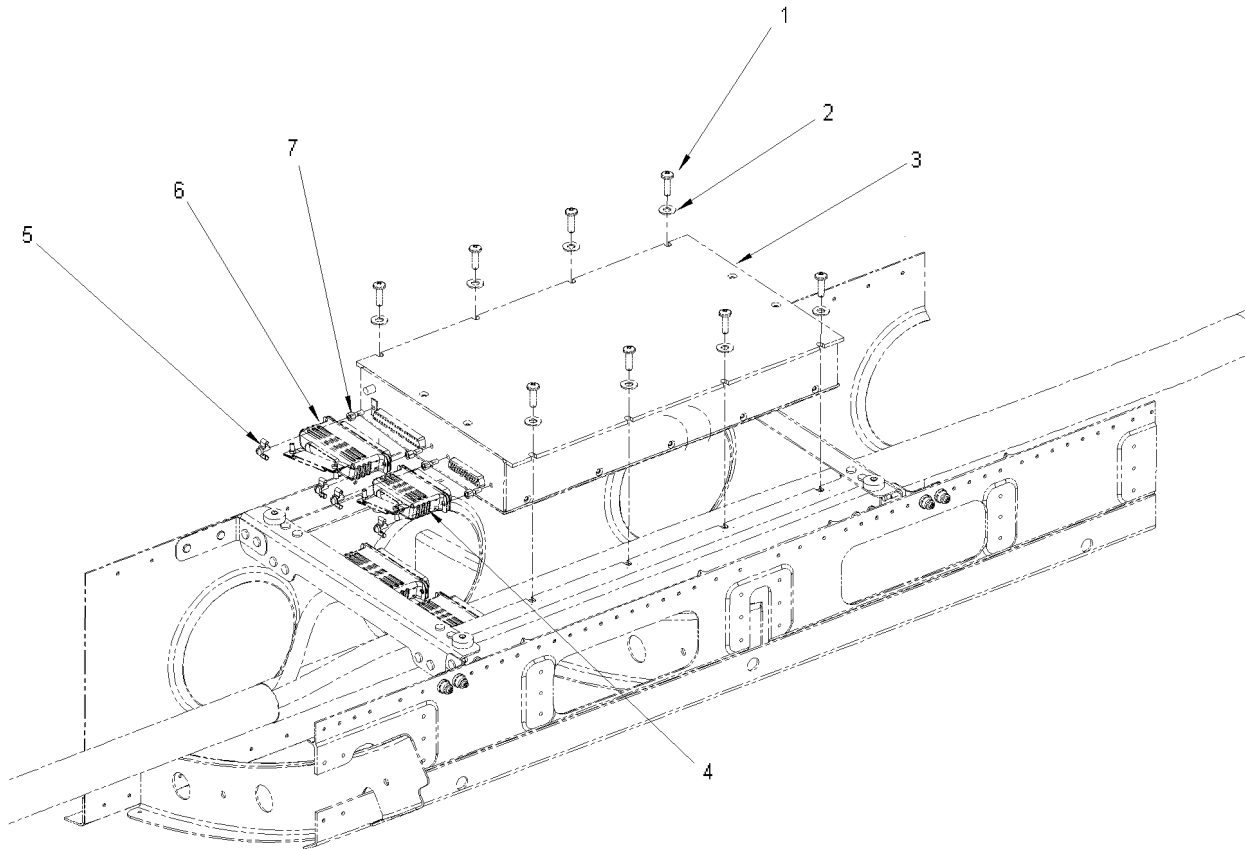
DSU Removal / Installation
Figure 1 (Sheet 1 of 1)

SERVICE BULLETIN



39A10P01 and 39A10P02 Electrical Connectors
Figure 2 (Sheet 1 of 1)

SERVICE BULLETIN



**Harness Modification
Figure 3 (Sheet 1 of 1)**



OPTIONAL

SERVICE BULLETIN

B. Cost

Contact Eclipse Aviation Customer Care for cost information.

C. Parts Disposition

Return removed DSU P/N 11-0323-07-A to Eclipse Aviation Customer Care.

4. RECORD OF COMPLIANCE

Upon completion of this Service Bulletin, make an appropriate maintenance-record entry specifying the Service Bulletin number.

5. NOTIFYING ECLIPSE AVIATION

On completing this service bulletin, the operator/maintainer shall complete the attached Compliance Record and send it to Eclipse Aviation via regular mail, fax, or e-mail.

MAILING ADDRESS	Eclipse Aviation Corporation ATTN: Customer Care 4100 Aerospace Parkway Albuquerque, NM 87121
FAX	1-505-241-8802
E-MAIL	customer care@EclipseAviation.com

